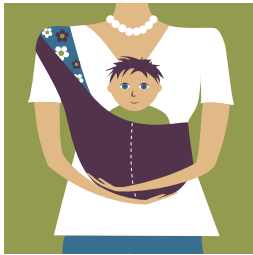


how to wear:



new babes: with sling folded in half, edge-to-edge, make a cozy hammock for your babe - place her, bottom first, between the layers.



wee-ones: after baby gains head control, try sitting him up in the sling where he can see the world. Fabric remains folded edge-to-edge with baby in the envelope between the layers.



hip-huggers: (6 months to toddler) your bigger baby will ride in comfort and style at your side. Unfold the fabric and bring the lower seam to the back of her knees.

Baby's bottom always sits on the seam. Once baby is positioned in the sling, adjust the length by folding the top layer down over your shoulder.

Safety Statement:

Please use with great care. The person using the sling holds ultimate responsibility for the safety of the child. The child can fall out. Please keep a hand on the baby and keep the fabric from covering his/her face.